

Personal Monitoring Badge

with Pre-paid Laboratory Analysis

Assay Technology's Personal Monitoring System is designed to measure exposure to chemicals to demonstrate compliance with Permissible Exposure Limits (PELs) and Short Term Exposure Limits (STELs) defined by the Occupational Safety and Health Act of 1970.

IMPORTANT

- Do not open foil pouch until ready for use.
- Not recommended for use after the expiration date.
- Save pouch, desiccant (If included), and sealer for return to laboratory for analysis.

Contains:

- Badges and attachment clips
- Instructions for Use
- Technical Insert
- Lab Request Forms (LRF)
- Pouch sealer



INSTRUCTIONS FOR USE



Opened Badge

A. Prepare to Begin Sampling

1. Refer to technical insert for recommended sampling time.
2. Assign a badge and LRF to each person to be monitored.
3. Open foil pouch and remove the badge from the pouch.
4. Retain the foil pouch and desiccant (if included).
5. Locate badge serial number printed on the back of the badge (two letters followed by five numbers).
6. Enter badge serial number on the LRF and assign a sample ID for the person/area.
7. Keep badge closed until sampling begins.

B. Begin Sampling

1. Attach clip to badge.
2. Open flip-top sampler cap to reveal sampling holes.
3. Clip badge to area or pocket/lapel of person being monitored near their breathing zone.
4. Record sampling date and start time on LRF.

C. End Sampling

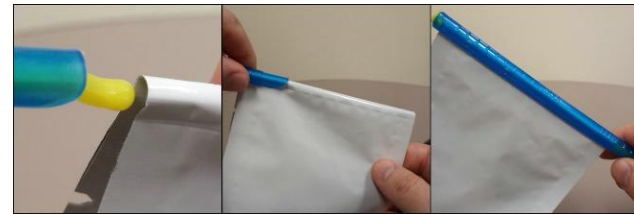
1. At the end of sampling time, remove badge from lapel or collar.
2. Close the flip-top sampler cap securely. There will be a solid snap.
3. Record stop time (and date, if applicable) on LRF.
4. Total sampling time (minutes) may be entered in place of start and stop times.



Closed Badge

D. Complete Lab Request Form (LRF)

1. Enter information of person/place to receive lab reports on the LRF or enter your customer number and the lab report will be sent to the person listed in our database for that customer number.
2. Complete all required information on the LRF.
3. Keep a copy of the LRF for your records.



E. Return Badge to Analytical Laboratory

1. Place 1 badge inside the pouch with the saved desiccant (if included).
2. Return clip with badge as proof of pre-paid lab analysis if applicable.
3. Fold the bag to crease and slip the yellow tab of the sealer underneath the crease. Slide the sealer across the pouch.
4. Refer to technical insert for maximum holding time allowable between sampling and lab analysis.
5. For the most reliable sample handling and prompt turn-around, send via a trackable express service (UPS, FedEx, etc.) rather than the U.S. Mail.
6. For analysis, return badges to:

AT Labs
8540 Crossroads Dr
Youngstown, OH 44514

By relinquishing samples for testing, you are allowing AT Labs to subcontract work between our two AIHA accredited laboratories without further notice. The lab performing the analysis will be identified on the confirmation of receipt and the final report.

For **Technical Support**, call **TOLL FREE 1-800-833-1258**
 or Email: custservice@assaytech.com

WARRANTY

Products and services are subject to regular quality control programs and evaluation studies carried out under controlled conditions. While we pledge to work with each customer to establish field procedures which produce acceptable results, performance under all field conditions is not guaranteed. **As our sole warranty, we guarantee to repair or replace any product or repeat any service found defective prior to its expiration date or within one year of sale for non-dated items.**